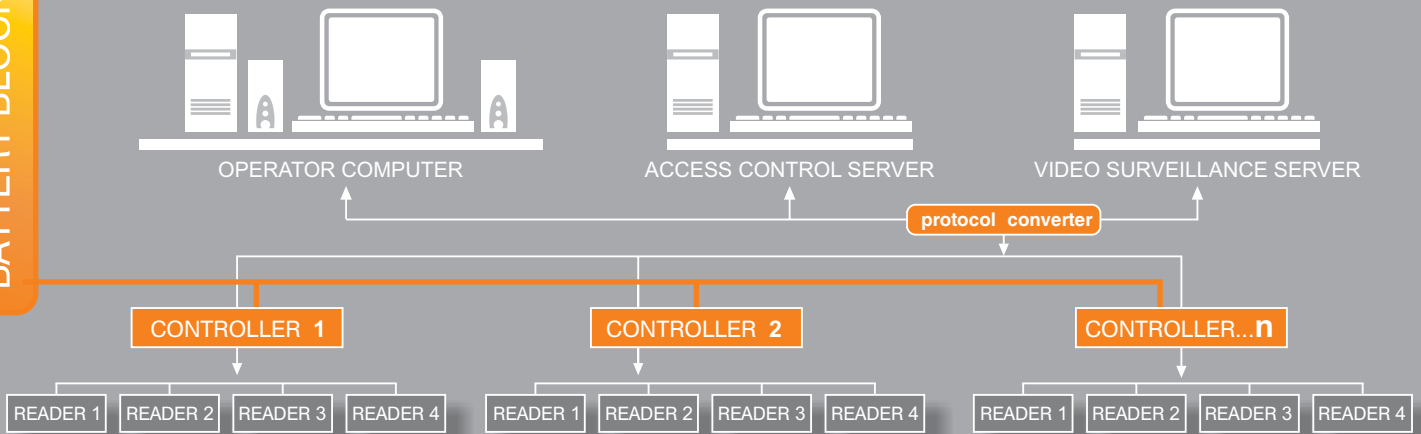


BeWare is a full access control system. BeWare guarantees permanent surveillance, which monitors movement, records stay and synchronizes with a video surveillance server.

Security for your business!

POWER SUPPLY & BATTERY BLOCK



BeWare access control system consists of the following elements:

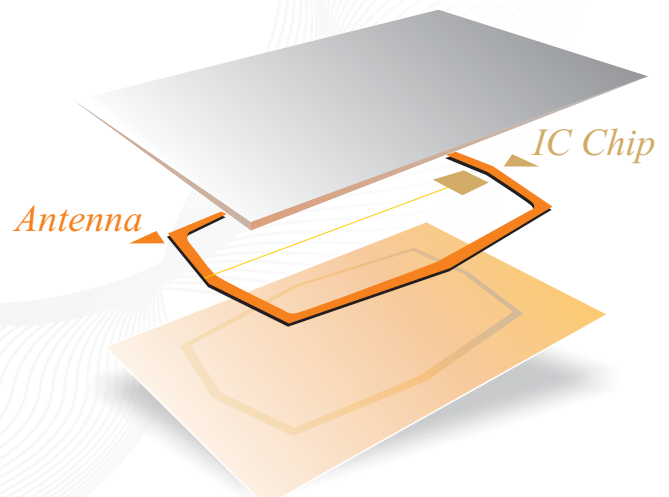
- Operator computer
- Access control server
- Link to the video surveillance server
- Door controllers
- Card readers
- Power supply and battery block
- Software
- Contactless (RFID) or other types of cards

*\* Up to 4 readers and electromechanical locks or other devices can be connected to each controller. Each controller contains an integrated thermo-sensor which measures the room temperature.*

## Designation:

- Permission or denial of access for employees or visitors to protected areas at time intervals set in advance.
- Additional programming of complex events through set sequences of operating electromagnetic door handles upon display of more than one identification cards.
- Record of all users' actions with search, filter and sort options, according to: user, time, period of time etc.
- Graphic display of the actions above on a set scheme, drawing of the movement scheme of one or more employees or visitors.
- Synchronization with a video surveillance server, where a video material with the respective door of protected area appears simultaneously with the drawing of the movement graphic;
- Option of checking the actions and match them with preliminarily set indicators, such as working time control, calculations of employees' working hours etc.

Identification is performed through contactless cards (RFID). They are not inserted in the reading device – information is read remotely. They do not need power supply. The information recorded in the chip by its manufacturer is a 64-bit unique code. This makes it very reliable and versatile. A magnet stripe can be mounted on the contactless card for double security.



**A**

Insert of user's name and password giving different rights to access. Insert of personal details..

**B**

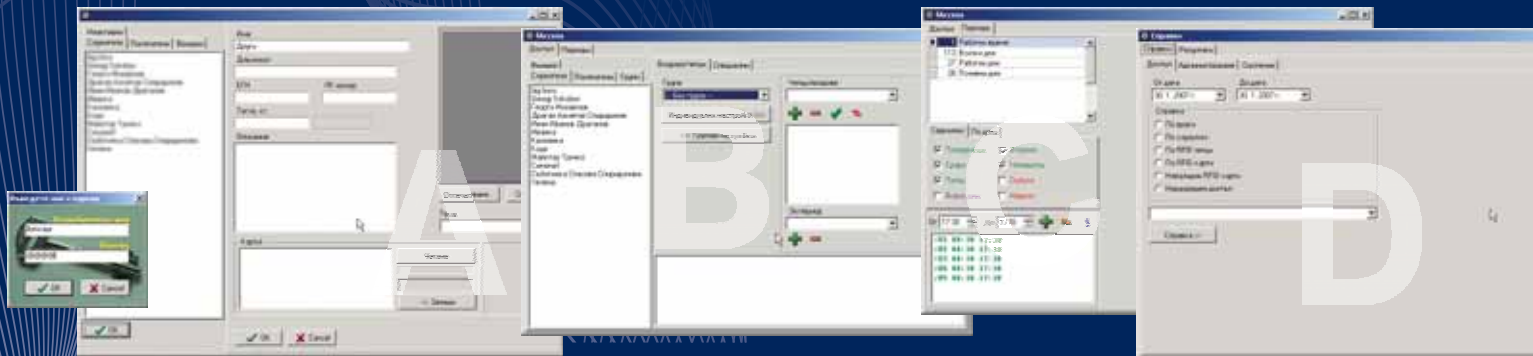
Set of individual rights to access for each employee.

**C**

Setting of access periods. Selection of periods according to dates, days of the week, or hour intervals.

**D**

Generating reports on employees' movements according to different criteria.



## TECHNICAL SPECIFICATIONS

<b>BeWare SM software system</b>	
External interfaces	USB -> Rs485 Ethernet TCP/IP
Controllers count	up to 60
Doors count	up to 240
Readers count	up to 240 (RS485 interface)
Extension option through adding outer USB interface modules.	
Cards count	Unlimited
Access level combinations	Unlimited
<b>SMW101 controller</b>	
Power supply	12-15V DC / 0.8 A
Dimensions (H/W/D)	144 x 80 x 40 mm
Operating temperatures	0 .. 50 °C
Digital inputs	8
Controlled relay outputs	4
Temperature sensor	Build-in
Reader interface	RS485 / RS232
Readers count	for RS485 - up to 4 readers for RS232 - one reader
Reader types	RFID, magnetic stripe, barcode
<b>SMW1200RF RFID reader</b>	
Power supply	9 -15V DC / 0.05 A
Dimensions (H/W/D)	68 x 95 x 20 mm
Operating temperatures	0 .. 45 °C
Transmit frequency	125 KHz
Typical read range	up to 15 cm
Supported RFID types	EM 40xx ISO 11784 ISO 11785